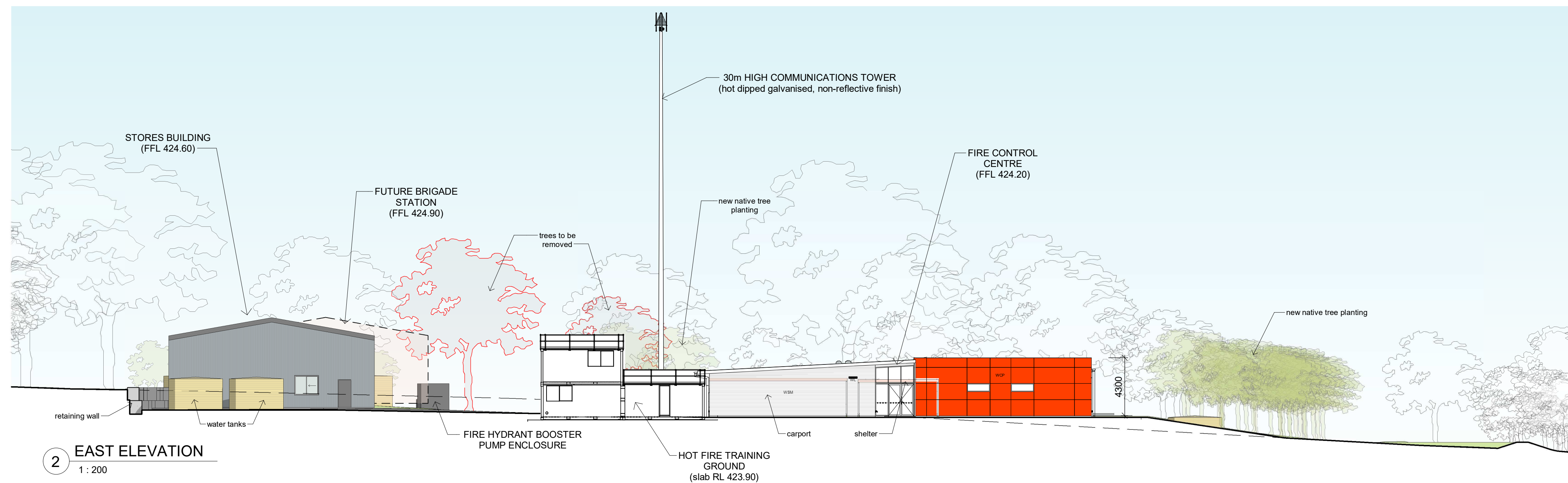


5 SOUTH ELEVATION
1 : 200



2 EAST ELEVATION
1 : 200



3 TYPICAL SECTION
1 : 200

NO.	DATE	REVISION	FIGURED DIMENSIONS TO BE TAKEN IN PREFERENCE TO SCALING.	CHECK ALL DIMENSIONS ON SITE BEFORE FABRICATING ANY ITEM.	THESE DRAWINGS SUBJECT TO COPYRIGHT.	STRUCTURAL/CIVIL CONSULTANT: 170 rankin Street Bathurst NSW 2795 tel (02) 6332 3343 ELECTRICAL SERVICES CONSULTANT: 88 Mailand Road, Mayfield NSW 2404 tel (02) 4907 5999 HYDRAULIC & FIRE SERVICES CONSULTANT: 5/55 Smith Street, Charlestown NSW 2290 tel (02) 4946 2633 LANDSCAPE CONSULTANT: PO Box 1053, Wagga Wagga NSW 2650	Calare Civil Electrical Projects Aust. McCallum PFCA Mark McCrone	<div><div>HavenhandMather</div><div>ARCHITECTS PLANNERS</div></div> <div>127 Keppel Street (PO Box 208), Bathurst 2795 Tel 02-63317155 Fax 02-63322115 Email: mail@havenhandmather.com.au Architects Registration Board: 6799</div> <div><div>PublicWorks Advisory</div><div>Member Havenhand Mather Architects No. 6799</div></div> <th rowspan="5">PROJECT: SOUTH WEST SLOPES FIRE CONTROL CENTRE & REGIONAL OFFICE BURLEY GRIFFIN WAY, HARDEN, NSW</th> <th rowspan="5">DRAWING: SITE ELEVATIONS & TYPICAL SECTION</th> <th rowspan="5">JOB NO. 1717</th> <th rowspan="5">SCALE: 1 : 200</th> <th rowspan="5">DATE: 20.10.17</th> <th rowspan="5">DRAWN: CJG</th> <th rowspan="5">CHECKED: DFM</th> <th rowspan="5">SHEET No: A.04</th> <th rowspan="5">REVISED: 4</th> <th rowspan="5">NUMBER IN SET: -</th>	PROJECT: SOUTH WEST SLOPES FIRE CONTROL CENTRE & REGIONAL OFFICE BURLEY GRIFFIN WAY, HARDEN, NSW	DRAWING: SITE ELEVATIONS & TYPICAL SECTION	JOB NO. 1717	SCALE: 1 : 200	DATE: 20.10.17	DRAWN: CJG	CHECKED: DFM	SHEET No: A.04	REVISED: 4	NUMBER IN SET: -
1	21.11.17	ISSUED FOR COMMENT																
2	23.11.17	DA ISSUE																
3	21.02.18	REVISED DA ISSUE																
4	04.04.18	REVISED DA ISSUE																